

# Accessories

## Pipe Mount, Float Bracket, Poly Pedestal, SLX Transmitter, Vertical Reed Switch

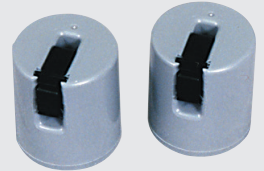
### PIPE MOUNT

- Includes cable clamp and stainless hose clamp for anchoring float cable.
- Secures 18/16 gauge, 14 gauge and 12 gauge cable in vertical direction



### CABLE WEIGHT

- Provides accurate pivot point for suspended float switches
- Clips to cable



### FLOAT BRACKET

- 304 stainless steel
- Secures float and power cords inside of tanks
- Compact design requires minimum space
- Includes black cord snubbers



### SLX TRANSMITTER

- Measuring ranges: 7.25 PSI (16.7 ftWC) and 14.50 PSI (33.4 ftWC)
- Accuracy: 1% full scale
- Operating temp: 32-122°F (0-50°C)
- Output: 4-20 mA, loop powered
- Excitation voltage: 8-32 VDC reverse polarity protected
- Overpressure protection: 58 PSI (133.6 ftWC)
- IP rating: IP 68 for permanent submersion
- Sensor housing dimensions: 2.0" diameter x 5.62" length (51 mm x 143 mm)
- Cable: TPE, 18 AWG, 2-wire shielded with vent tube
- Two-year limited warranty



### POLY PEDESTAL

- Convenient mounting base for indoor/outdoor use
- For use with 10" x 8" enclosures
- Covered access opening
- Installs and wires quickly



### VERTICAL REED SWITCH

- Control differential: .375 inch (1 cm)
- Maximum angle from vertical: 5°
- Electrical:  
250 mAmps, 12-125 VAC, 50/60 Hz  
500 mAmps, 6-12 VDC, 50/60 Hz



**CSI Controls**™

Toll Free: 800-363-5842 • Fax: 419-289-2535  
customer.service@sjeinc.com  
www.csicontrols.com

## ACCESSORIES

### Pipe Mount

Part#	Description
1008569	18 & 16 Gauge Cable Clamp Assembly

### Float Bracket

Part#	Description
1027830	304 Stainless Steel Float Bracket with 3 Black Cord Snubbers
1027647	304 Stainless Steel Float Bracket with 4 Black Cord Snubbers

### Poly Pedestal

Part#	Description
1027163	Poly Pedestal Mounting Base

### Cable Weight

Part#	Description
1002230	Cable Weight Assembly

### SLX Transmitter

Part#	Description
1053719	SLX, 16.7 ftWC, 25 ft. cable
1053720	SLX, 16.7 ftWC, 50 ft. cable
1053723	SLX, 33.4 ftWC, 25 ft. cable
1053724	SLX, 33.4 ftWC, 50 ft. cable
1052813	6 hook bracket (optional)

### Vertical Reed Switch

Part#	Description
1032426	15CSRS1



Toll Free: 800-363-5842 • Fax: 419-289-2535  
customer.service@sjeinc.com  
www.csicontrols.com