

Control Panel Accessories

Panel Mounting Post, SLX Transmitter, Cord Seals, 4-20 mA Simulator, Simplex Installation Kit, Duplex Installation Kit, Hub Assembly, Cable Connectors, and Riser Mounting Kit

PANEL MOUNTING POST

Provides easy installation of control panels.

- Removable front access door for easy wiring
- Can be mounted directly into ground, over a 4x4 post, or conduit for a quick, clean, easy installation
- Includes 4 stainless steel mounting bolts
- Includes drilling template
- Accommodates enclosures up to 14 x 12 x 6 inches (35.6 x 30.5 x 15.2 cm)



SLX TRANSMITTER

- Measuring ranges: 7.25 PSI (16.7 ftWC) and 14.50 PSI (33.4 ftWC)
- Accuracy: 1% full scale
- Operating temp: 32-122°F (0-50°C)
- Output: 4-20 mA, loop powered
- Excitation voltage: 8-32 VDC reverse polarity protected
- Overpressure protection: 58 PSI (133.6 ftWC)
- IP rating: IP 68 for permanent submersion
- Sensor housing dimensions: 2.0" diameter x 5.62" length (51 mm x 143 mm)
- Cable: TPE, 18 AWG, 2-wire shielded with vent tube
- Two-year limited warranty



CORD SEALS

Provides strain relief and a liquid-tight seal.

- Seals 1-4 cables in 2" terminal adapters
- Seals 1-6 cables in 2½" terminal adapters
- PVC plugs included (for unused cable positions)
- Ground wire



4-20mA SIMULATOR

- Easy-to-use, hand-held test instrument designed to generate an adjustable 4-20mA signal from loop power



SIMPLEX INSTALLATION KIT

Provides easy weather-proof wire installation for simplex control panels.

Includes:

- 2" hub assembly
- 2" cord seal (seals 1-4 cables)
- ¾" hub assembly



DUPLEX INSTALLATION KIT

Provides easy weather-proof wire installation for duplex control panels.

Includes:

- 2.5" hub assembly
- 2.5" cord seal (seals 1-6 cables)
- ¾" hub assembly



HUB ASSEMBLY

Provides liquid-tight conduit attachment location.

- Available in ¾, 1, 1.5, 2 and 2.5 inch sizes.
- UL Listed and CSA Certified terminal adapter



CABLE CONNECTORS

Provides strain relief and a liquid-tight seal.

- UL Listed and CSA Certified
- VDE Approved

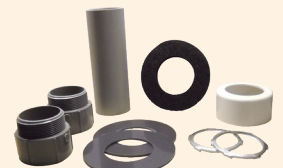


RISER MOUNTING KIT

Secures panel mounting post to tank riser.

Includes:

- (2) hub assemblies
- PVC pipe and connecting hardware
- Conduit for routing pump and float from tank riser to post



unassembled



assembled



CSI Controls®

Toll Free: 888-342-5753
customer.service@sjeinc.com
www.csicontrols.com

CONTROL PANEL ACCESSORIES

Panel Mounting Post

Part#	Description
1038027	Panel Post Assembly

POST: Polyethylene (34 x 7 x 6 inches)

BOLTS: 4X rated stainless steel with gaskets

SLX Transmitter

Part#	Description
1053719	SLX, 16.7 ftWC, 25 ft. cable
1053720	SLX, 16.7 ftWC, 50 ft. cable
1053723	SLX, 33.4 ftWC, 25 ft. cable
1053724	SLX, 33.4 ftWC, 50 ft. cable
1052813	6 hook bracket (optional)

Cord Seals

Part#	Description
1008517	2 inch Cord Seal (1-4 Cables)
1037126	2.5 inch Cord Seal (1-6 Cables)

SEAL: neoprene

WASHERS: stainless steel

NUT AND BOLT: stainless steel

WIRE/CABLE ACCOMMODATED: SJOW, SJTW, 18/2, 18/3, 16/2,16/3,14/2 and 14/3

4-20mA Simulator

Part#	Description
1039199	4-20mA Simulator

Simplex Installation Kit

Part#	Description
1038029	Installation Kit, Simplex

Duplex Installation Kit

Part#	Description
1038030	Installation Kit, Duplex

Hub Assembly

Part#	Description
1030564	.75 inch Hub Assembly
1009305	1 inch Hub Assembly
1008848	1.5 inch Hub Assembly
1008849	2 inch Hub Assembly
1037128	2.5 inch Hub Assembly

TERMINAL ADAPTER (HUB): PVC

GASKET: neoprene

LOCK NUT: metal

Cable Connectors

Part#	Description
1002574	1/2 inch Round Cable Connector (RCC-8)
1002575	3/4 inch Round Cable Connector (RCC-12)
1009868	1 inch Round Cable Connector (RCC-16)
1002576	1/2 inch Flat UF Cable Connector (UFCC-8)
1002577	3/4 inch Flat UF Cable Connector (UFCC-12)

ROUND CABLE SPECIFICATIONS

MATERIAL: polymid flame-resisting, self-extinguishing plastic

O RING: neoprene plastic

HOLE REQUIREMENT: NPT threaded OR clearance holes (jam nut included)

RCC-8

NPT Hub: .5 inch (1.27cm)

Maximum Diameter: .480 inch (1.22 cm)

Minimum Diameter: .270 inch (.68 cm)

Wire/Cable (AWG) Accommodated: 18/2, 18/3, 18/4, 16/2, 16/3, 16/4, 14/2, and 14/3

RCC-12

NPT Hub: .75 inch (1.90 cm)

Maximum Diameter: .709 inch (1.80 cm)

Minimum Diameter: .545 inch (1.38 cm)

Wire/Cable (AWG) Accommodated: 14/2, 14/3, 14/4, 12/2, 12/3, 12/4, 10/2, and 10/3

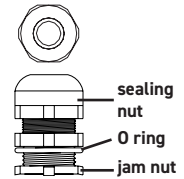
RCC-16

NPT Hub: 1.0 inch (2.54 cm)

Maximum Diameter: .98 inch (2.49 cm)

Minimum Diameter: .71 inch (1.80 cm)

Wire/Cable (AWG) Accommodated: Round cable with outside diameter within range identified above.



FLAT UF CABLE SPECIFICATIONS

MATERIAL: weather-stabilized thermo plastic

O RING: neoprene plastic

HOLE REQUIREMENT: NPT threaded OR clearance holes (jam nut included)

UFCC-8

NPT Hub: .50 inch (1.27 cm)

Maximum: .26 x .56 inch (.66 - 1.42 cm) slot

Wire/Cable (AWG) Accommodated: 14/2, 12/2, 10/2

UFCC-12

NPT Hub: .75 inch (1.90 cm)

Maximum: .26 x .60 inch (.66 - 1.52 cm) slot

Wire/Cable (AWG) Accommodated: 14/3, 12/3

Riser Mounting Kit

Part#	Description
1038262	Riser Mounting Kit (2 inch)
1053756	Riser Mounting Kit (2.5 inch)



Toll Free: 888-342-5753
customer.service@sjeinc.com
www.csicontrols.com

9500480A 11/20

© 2020 SJE, Inc. All Rights Reserved.
CSI CONTROLS is a trademark of SJE, Inc.