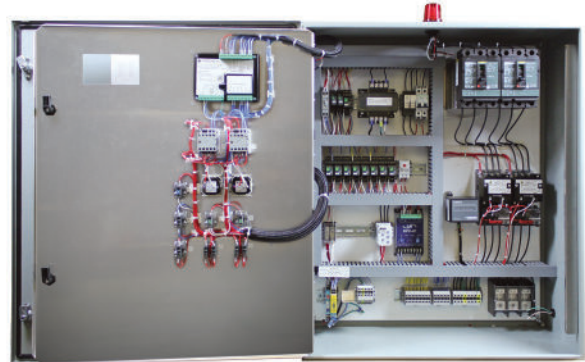


ACCEL[®]

PANEL PROGRAM



Three phase duplex 4-20mA panel shown

Drive more sales with our new **ACCEL[®] Panel Program** designed to deliver top quality control solutions in a quick turn-around time for simplex, duplex and triplex water/wastewater applications. We've **pre-engineered** popular base models with **select options** that are quoted and delivered with **accelerated lead times**:

- **Same day quotes**
- **24-hour submittals**
(includes BOM, layout drawing and electrical schematic)
- **10-day build-to-ship**
(Due to supply chain and labor constraint issues, lead times are as quoted and subject to change based on availability.)

Our new user-friendly **ACCEL[®] self-service quote tool** provides **instant pricing** for your control solution. We have standardized panel model schemes for easy identification and reorder. And we offer the best customer service and technical support in the industry.

BASE MODEL FEATURES

- Single phase 115V, 200V, and 230V
- Three phase 208V, 230V, 460V, and 575V
- NEMA 4 painted steel enclosure – single door wall mount
- Inner door with 22mm Pump Hand-Off-Auto switches and Pump Run indicators
- Multitap transformer for 208/240/480 Volts (three phase models only)
- IEC motor starting devices up to 32 full load amps
- Pump ETM's
- Alarm Package (includes flashing beacon, audible horn, Silence/Test switches, and Form C auxiliary contacts)
- cUL 508 Listed
- Two-year limited warranty

SELECT OPTIONS

- NEMA 4X 304 stainless steel or NEMA 4X fiberglass enclosure
- Indicators mounted on enclosure door
- IEC rated motor starters up to 65 full load amps or NEMA rated motor starters up to 45 full load amps (NEMA for three phase models only)
- User friendly pump controllers
 - Float-based control for pump up or pump down applications*
 - 4-20mA level input control for pump up or pump down applications; includes float backup*
- Redundant off with alarm activation
- Seal failure and thermal cutout notification
- Pump Run auxiliary contacts
- Pump Fail auxiliary contacts
- Power Fail auxiliary contacts
- ETM/Event Counter Combination Unit
- Lightning arrestor
- Anti-condensation heater
- Phase/Voltage monitor
- UL698A intrinsically safe circuit extensions into hazardous location for float on transmitter based requirements

*Floats and level transmitters must be ordered separately.

