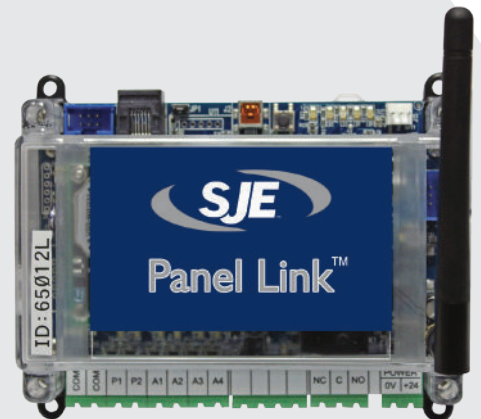


# SJE Panel Link™

## Web-Based Cellular Remote Monitoring for Duplex Lift Stations

The SJE Panel Link controller offers cloud based management of duplex wastewater pump stations.

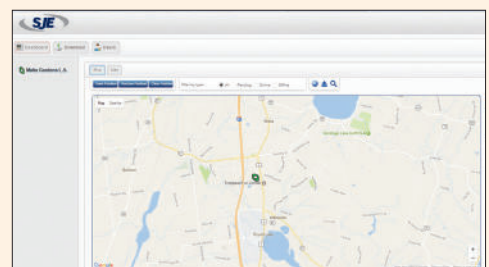
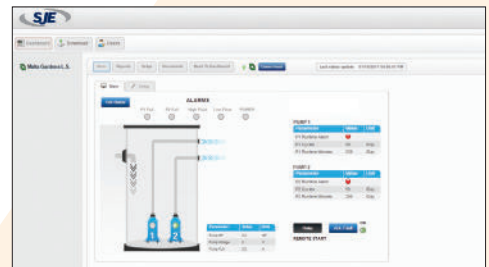
Alarms are monitored and service personnel notified in the event of failure via email and text SMS text messaging. Data logging and trending of critical information enables users to visually track system performance and recognize impending problems. Station data can be seen in a simple and intuitive format from a web browser on a computer, tablet or smartphone.



### FEATURES

- 2 models available: **Light** or **Premium**
- Built-in I/O (no controller required)
- 2 pump run digital inputs
- 4 configurable digital alarm inputs
- 1 relay output
- Battery backup for digital inputs
- Access multiple SJE Panel Link products from one user friendly portal
- User is able to enter the tank diameter for in-flow and pump discharge flow monitoring
- 1 level input (4-20 mA) - Premium model only
- 1 motor amps input (4-20 mA) - Premium model only
- Level monitoring and data logging via 4-20 mA signal - Premium model only
- Monitor and log pump current - Premium model only

### SAMPLE SCREENS



### PART NO. DESCRIPTION

- **1064157** SJE Panel Link™, Module, Light, 4G, Global
- **1064285** SJE Panel Link™, NEMA 4X, Light, 4G, Global
- **1064162** SJE Panel Link™, Module, Premium, 4G, Global
- **1064286** SJE Panel Link™, NEMA 4X, Premium, 4G, Global

\*Level transmitter sold separately.